

# Crash Test Results

## New Car Safety

### PEUGEOT 308 XS (LHD)

2008 on Front + side & head airbags



Offset crash test at 64km/h



**ANCAP** Occupant Protection  
Rated ★★★★★

**Occupant Protection Score 32.32 out of 37**

Variant: XS 5 dr hatch Eng: 1.6 litre diesel  
Kerb weight: 1320 kg Category: SMALL CAR  
Vehicles built: 2007 Tested by Euro NCAP

**Important note:** The *diesel left-hand-drive* European model was tested by Euro NCAP. Australasian specifications may vary and therefore models sold in Australasia might provide different levels of protection to those described on this page.

#### Model History and Safety Features

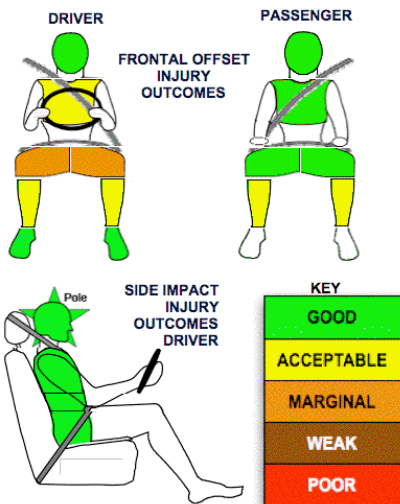
The tested model of Peugeot 308 was introduced in Australia and New Zealand during 2008.

Dual front airbags, side airbags, head-protecting side curtains and antilock brakes (ABS) with electronic brake distribution (EBD) are standard equipment. Electronic stability control (ESC) is optional on the XS variants and standard on other variants. A driver knee airbag, as tested, is optional on XSE/XTE variants in Australia, and standard on the XSP and HDi variants in New Zealand, but is not available on XS variants. Intelligent seat belt reminders are fitted to both front seats of the XS variant. The front seat belt buckles are mounted on the seats and the upper anchorages are adjustable. These features improve the fit of the seat belt. Pretensioners are fitted to the front seat belts to reduce slack in the event of a crash.

#### OCCUPANT PROTECTION: 4 Stars

The Peugeot 308 scored 12.32 out of 16 in the offset crash test. The passenger compartment held its shape well. There was a slight risk of serious chest injury and moderate risk of serious leg injury for the driver.

The vehicle scored 16 of 16 in the side impact crash test and a further two points in the optional pole test. A separate ANCAP rating is available for the other variants of the Peugeot 308.



#### FRONTAL OFFSET CRASH TEST (v4.1)

Body region scores out of 4 points each: Head/neck 4 pts, chest 3.37 pts, upper legs 2 pts, lower legs 2.95 pts.

The passenger compartment held its shape well in the offset crash test. The brake pedal moved rearwards by 38 mm and upwards 6 mm. The steering wheel hub moved 41mm forward, 6mm downward and 7 mm sideways. The front ("A") pillar moved 16 mm rearwards. All doors remained closed during the crash. After the crash the driver's door could be opened with high manual effort.


The airbag cushioned the head of the driver and contact was stable. The vehicle tested by Euro NCAP had a driver knee airbag but the Australasian model does not have this safety feature as standard. ANCAP has applied a 2 point modifier to the driver leg score to take account of the extra risk of injury without the knee airbag.

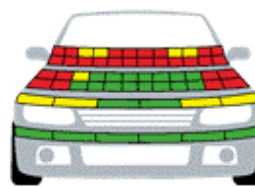
#### SIDE IMPACT CRASH TEST (v4.1)

Body region scores out of 4 points each: Head 4 pts, chest 4 pts, abdomen 4 pts, pelvis 4 pts.

The vehicle was eligible for an optional pole impact test, since it had head-protecting side airbags and scored four points for the head in the side impact test. The manufacturer decided to go ahead with the pole test and the vehicle earned a further two points.

#### PEDESTRIAN PROTECTION: 3 Stars

PEDESTRIAN PROTECTION		
 <b>ANCAP</b> Rated ★★★★★ Tested by Euro NCAP v4.1	Child head impacts	7.52
	Adult head impacts	0.14
	Upper leg impacts	5.32
	Lower leg impacts	6.00
	Total (out of 36)	18.98



GOOD  
ADEQUATE  
MARGINAL

March 2008

PO Box 4041  
Manuka ACT 2603  
p308\_08xs.doc  
Issued 10/03/2008



**ANCAP**

Crash testing for safety  
AUSTRALASIAN  
NEW CAR ASSESSMENT  
PROGRAM

www.ancap.com.au

# TECHNICAL DATA - PEUGEOT 308 XS - 2008 on

## INJURY MEASUREMENTS

Body region	Offset Crash Test at 64km/h (v4.1)		Side Impact Crash Test at 50km/h (v4.1)
	Driver	Passenger	Driver
<b>Head HIC</b>	350	492	54
Acceleration (g for 3ms)	44.4	51.2	25.1
<b>Neck - Shear (kN)</b>	0.87	0.20	-
Tension (kN)	0.87	1.60	-
Extension (Nm)	5.8	14.3	-
<b>Chest Accln (g for 3ms)</b>	-	-	-
Compression (mm)	26.44	20.60	21.10
Viscous criterion (m/s)	0.10	0.06	0.13
<b>Abdomen - Force (kN)</b>	-	-	0.770
<b>Pelvis - Force (kN)</b>	-	-	0.970
<b>Upper legs Force (kN)</b>			
Left	0.50	1.20	
Right	0.89	0.66	
<b>Knee displ (mm)</b>			
Left	0.40	0.10	
Right	0.30	0.40	
<b>Lower legs Force (kN)</b>			
Left	3.57	2.01	
Right	2.26	1.81	
<b>Index (Upper/Low)</b>			
Left	0.48 /0.45	0.61 /0.45	
Right	0.30 /0.28	0.47/0.45	

### Bonus points (maximum 5)

Pole Test: 2 pts

Seat belt reminders: 2 (see table below for details)

### Modifiers - deductions from offset test scores

Head	No deduction
Chest	No deduction
Upper leg Variable & conc. loading	No deduction
Lower leg	No deduction
Foot score	Score 4 points

### Modifiers - deductions from side impact test scores

Chest	No deduction
-------	--------------

### Safety features

These specifications are subject to change. Please check with manufacturer for the latest specifications.



Driver airbag	S	Antilock (ABS) brakes / Electronic brake distribution / Brake Assist	S/S/S
Passenger front airbag	S	Electronic stability control (ESC, VSC, DSC, ESP, VSA)	O#
Side airbags, front seats - chest protection	S	3 point centre rear seat belt	S
Side airbags, front seats - head protection	S	Active head restraints - front seats	X
Side airbags, rear seats - head protection	S	Intelligent seat belt reminder - driver	S
Driver knee airbag	V*	Intelligent seat belt reminder - front passenger	S
Seat belt pretensioners (front/rear)	S/X	Intelligent seat belt reminder - rear seats	V

Key: \* This ANCAP assessment applies to models without a knee airbag.

S = standard on all variants

O = optional on base variant. May be standard on higher variants

V= not available on base variant but standard or optional on higher variants

X = not available on any variant

# ESC required by ANCAP for 5 star rating from 2008